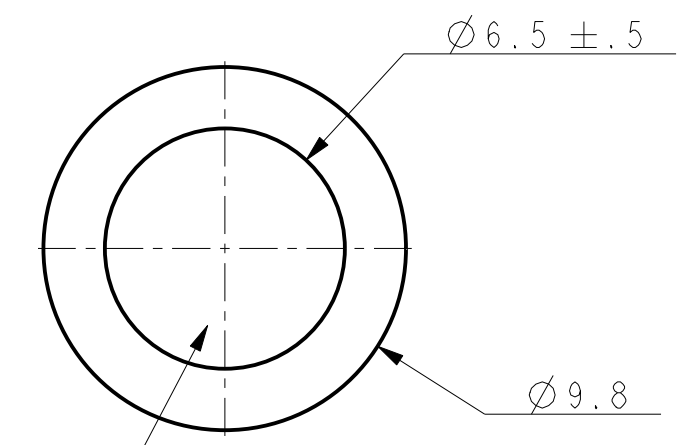


REVISIONS				
DRAWN	REV	DESCRIPTION	DATE	APPROVED
PAM		ORIGINAL	01-06-03	
PAM	A	COMPRESSION NOTE, 1.75 DIM ADDED, Ø7 WAS Ø7.2	01-29-03	
PAM	B	MAX FLASH Ø6.5 ADDED	01-30-03	
PAM	C	C-1100 WILL BE COLORED GRAY	02-25-03	
PAM	D	ONE CRIT DIM REMOVED, 60° REF WAS 60°, Ø6.5±.5 WAS Ø7REF, C-1128 WAS C-1100 COLORED GRAY, Ø9.8 WAS Ø9.6	05-15-03	DTC
PAM	E	PIN PUSHOUT FORCE NOTE ADDED	06-16-03	JAS
PAM	F	PUSHOUT FORCE NOTE MADE GENERIC ITEM CODE CHANGED	05-13-04	JAS
TC	07	UPDATED DRAWING FORMAT, ADDED C-8000 SERIES MATERIAL	03-22-11	MS



TAPERED STEEL PIN: PIN6 REV D

2. REFERENCE: PIN PUSHOUT FORCE = 4LBS MIN WHEN TESTED AT 68° TO 72°F, 100 MM/MIN MINIMUM RATE WITH TYPICAL MOUNTING HOLE.

1. CRITICAL DIMENSIONS ARE MARKED WITH "*".

NOTES:

PG-100-C8002	C-8002
PG-100-3	C-1128
PG-100-1	C-1002
PART	MATERIAL

RANGE	TOL
0<DIM<=2	±0.15
2<DIM<=25	±0.25
25<DIM<=50	±0.4
50<DIM	±0.6

UNLESS OTHERWISE SPECIFIED UNITS ARE: MM (IN) TOLERANCE FOR ANGLES: ±1.0°
ALLOWABLE FLASH: .12 MM
GATE: ±.15MM

MATERIAL: SEE TABLE
QUALITY CONTROL: MUST COMPLY WITH E-A-R SPECIALTY COMPOSITES SUPPLIER QUALITY MANUAL REQUIREMENTS
NOTES: ANY FEATURE NOT DIMENSIONED IN PRINT MUST BE VISIBLY PRESENT, UTILIZE 3D CAD FOR CREATION

E-A-R SPECIALTY COMPOSITES		
TITLE: PIN GROMMET		
SIZE: B	DRAWING NO.: PG-100	PAGE NO.: 1 OF 1